

LM

feel the  
difference



להינות מהעבודה  
**LM**Dental

LM

feel the  
difference



# לכישורים שלך מגיע LM

כלי היד של LM Instruments הם תוצר של מחקר מתמשך המסתמך על עקרונות הארגונומיה.

חברות מתחרות רואים ב - LM Instruments מקור לחדשנות ומעתיקות אותה.

עובי ואיכות הסיליקון בו מצופים הכלים, צורת הלהבים ומידת הגמישות שלהם, משקלם של הכלים וצבעם כולם יחד הם פרי מחקר המעמיד את LM Instrument חברת הבת של Planmeca בראש רשימת יצרני כלי היד לרפואת השיניים.



## 5 DIAGNOSTICS

Mirror handles | Explorers | Periodontal probes | Furcation probes | Diagnostic instrument set

## 12 PERIODONTICS

Sharp Diamond sharpen free instruments | Sickle scalers | Universal curettes | Special instruments | Gracey finishing curettes | LM-ErgoMix implant series | Instrument sets | Surgical handle

## 28 RESTORATION

Instruments for: Cavity preparation | Carrying and placing filling materials | Condensing and layering | Contouring and sculpting | Carving | Excess removal | Filling and crown removal | Instrument set | Special products

## 39 ENDODONTICS

Hand files and reamers | Root canal explorer | Root canal excavators | Endo plugger | Endo spreaders

## 40 EXTRACTION

Elevators | Luxating instruments | Root tip instruments

## 43 IMPLANT SURGERY

Instruments for implant positioning

## 45 ORTHODONTICS

Removable appliances | Orthodontic hand instruments



## LM Instrument - חלוצה ביצור כלי היד הארגונומיים

1. אינם מחליקים מהיד - המבנה והחיספוס של פני השטח הם עיקרון מוביל.

2. משקל נמוך ועיצוב הקצוות הפעילים מהווים בסיס למניעת נזקים אורטופדיים.

3. התחושה של הכלי והאחיזה הקלה מבטיחים תנועה מדויקת וביצוע מדויק.

4. עמידות מפני שחיקה ונוחות השימוש משרתים את הרופא והמתרפא כאחד.

5. LM ErgoSense - תוצאה של מחקר יסודי לפיו קוטר כלי של 14 מ"מ בשילוב עם סיליקון ייחודי לספיגת לחץ האחיזה הם התשובה המדויקת ביותר למניעת נזקים מצטברים לשרירים ועצמות הידיים הנובעים מפעולות מחזוריות וחדות.

### LM-DuraGradeMAX supersteel

- High wear resistance
- Immune to corrosion
- Can be resharpened

### DARK DIAMOND non-stick coating

- Exclusive diamond like coating for restorative instruments
- Extremely hard & smooth surface
- Easy non-stick application and modeling of composite
- Dark color for maximum contrast

NON-STICK



## MIRROR HANDLES

### Simple stem

LM 25 mirror handle threads are in accordance with international standard M2.5. The mirror shank must have a diameter of 2.5 mm.

Mirrors are sold separately.  
Product no 10P12, box of 12 pcs, mirror #4 simple stem.

### Cone socket

LM 28 mirror handle threads are in accordance with international standard UNF4-48. The mirror shank must have a diameter of 2.6 mm.



ErgoSingle Mirror Handle

**LMErgoSingle** LM 25 ESI

- Well balanced, better reachability
- Colors: red, grey, blue



Mirror Handle 25

**LMErgoSense** LM 25 ES

- Single-ended
- Simple stem design
- Colors: red, grey, blue



Mirror Handle 28

**LMErgoSense** LM 28 ES

- Single-ended
- Cone socket design, UNF4-48, with special threads
- Colors: red, grey, blue



Mirror handle, ortho

**LMErgoSense** LM 25-26 ES

- Bausch-Verbiest design
- Orthodontic mirror handle
- For measuring the sagittal overjet and vertical overbite
- Millimeter scale, total length 25 mm



Mirror Handle JM

**LMErgoSense** LM 25-473 ES

- For implant installation

Handle options:



**LMErgoSense**

# EXPLORERS

For diagnosing calculus and caries and exploring of pockets, restorations and furcations.



Explorer 5-8

**LM**ErgoSense LM 5-8 ES

- Standard explorer for diagnostic and operative procedures



Explorer 5-9

**LM**ErgoSense LM 5-9 ES

- Standard explorer for diagnostic and operative procedures



Explorer, centered 9-17C

**LM**ErgoSense LM 9-17C ES

- Centered tip (17C)
- Elongated lower shank and "back-action" blade



Especially for probing distal surfaces of posterior teeth.



Explorer 17-23

**LM**ErgoSense LM 17-23 ES

- For distal surfaces (17)
- Elongated lower shank and "back-action" blade (17)
- For areas in the vicinity of proximal contact surfaces (17)
- Also for probing occlusal surface grooves (23)
- For detecting subgingival calculus (23)



Explorer 17C-23

**LM**ErgoSense LM 17C-23 ES

- For distal surfaces (17C)
- Centered tip (17C)
- For areas in the vicinity of proximal contact surfaces (17C)
- Also for probing occlusal surface grooves (23)
- For detecting subgingival calculus (23)



Especially for probing distal surfaces.



Explorer 3-6

**LM**ErgoSense LM 3-6 ES

- Standard explorer for diagnostic and operative procedures



Explorer 11-12

**LM**ErgoSense LM 11-12 ES

- Angles similar to Gracey 11/12
- For probing proximal and cervical caries



For subgingival root examination.



TOP FAVORITE



High sensitivity  
at seams.



Handle options:



LM ErgoSense

Flexplorer 11F-12F

LM ErgoSense LM 11F-12F ES

- Flexible explorer angulated similarly to Gracey 11/12
- Well-suited for periodontal diagnosing of subgingival calculus and probing deep pockets

Explorer 18-19

LM ErgoSense LM 18-19 ES

- For prosthetic crowns, bridges and inlay- / onlay fillings
- Excellent sensitivity at seams

Explorer 29

LM ErgoSense LM 29 ES

- Holst design
- Lateral angle on the shank
- Single-ended

Explorer 9

LM ErgoSense LM 9 ES

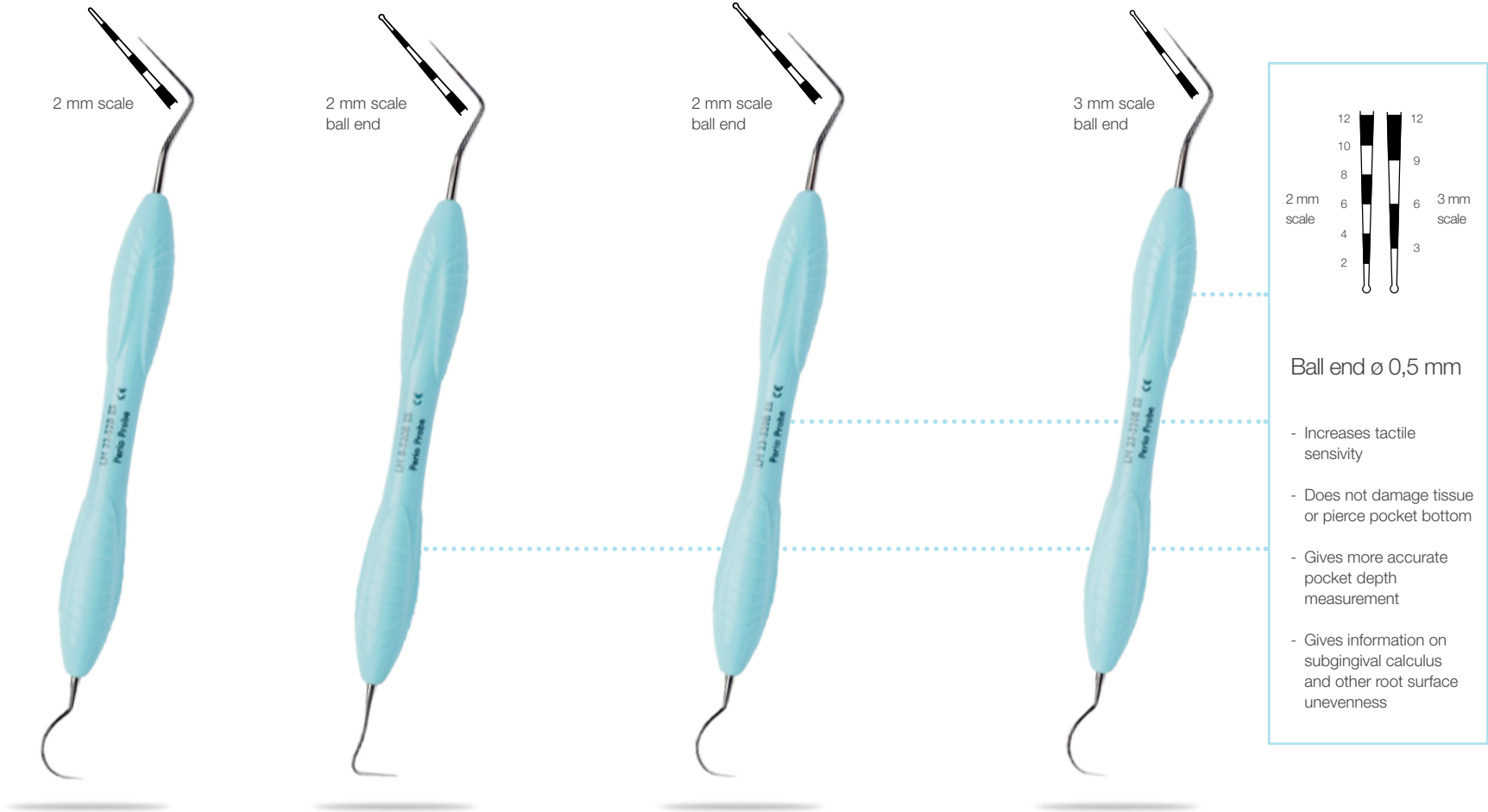
- Single-ended



PERIODONTAL PROBES

Combination instruments for probing caries and parodontium.

- Most periodontal probes are available also in single-ended designs.
- Color-coded scales facilitate measurement of the gingival pocket



Explorer - Periodontal Probe 23-52B

LMErgoSense LM 23-52B ES

Explorer - Periodontal Probe 8-520B

LMErgoSense LM 8-520B ES

Explorer - Periodontal Probe 23-520B

LMErgoSense LM 23-520B ES

Explorer - Periodontal Probe 23-530B

LMErgoSense LM 23-530B ES



Williams Probe

**LM**ErgoSense LM 51 ES

- Single-ended



Explorer - WHO Probe  
8-550B

**LM**ErgoSense LM 8-550B ES



Explorer - WHO Probe  
23-550B

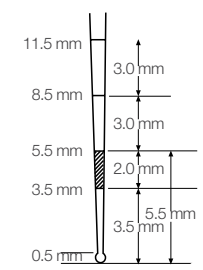
**LM**ErgoSense LM 23-550B ES



WHO Probe 550B

**LM**ErgoSense LM 550B ES

- Single-ended



WHO probe  
was developed  
for CPITN method.

Diagnosis:

- 0 = healthy
- 1 = bleeding during probing
- 2 = supra- and/or subgingival calculus, filling or crown excesses
- 3 = gingival pockets to 5 mm
- 4 = pockets deeper than 6 mm





North Carolina Probe  
54B

LMErgoSense LM 54B ES

- Single-ended



Marquis 12 Probe 53B

LMErgoSense LM 53B ES

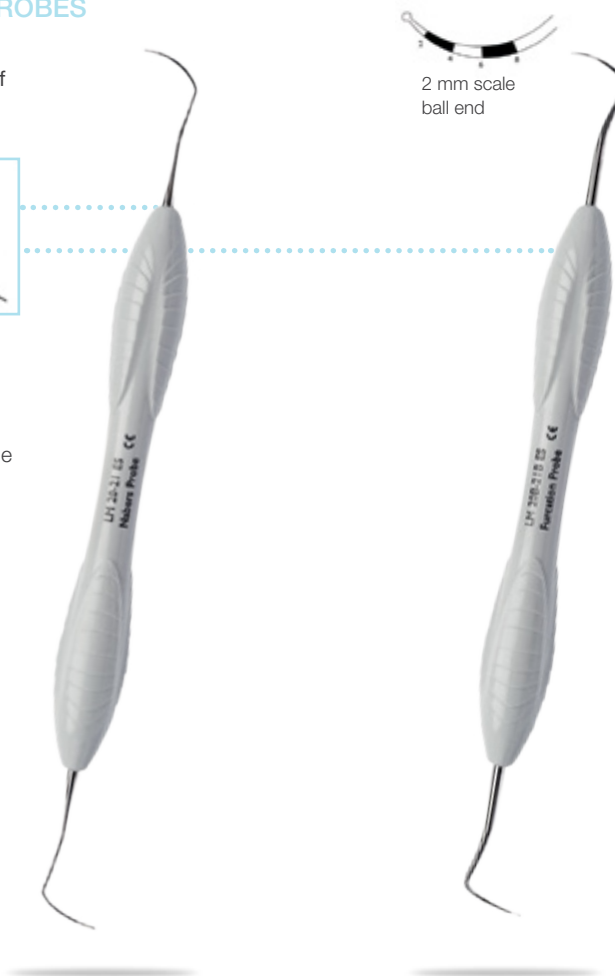
- Single-ended  
- Similar to 530B but without ball end

## FURCATION PROBES

For probing the  
extent and depth of  
furcation lesions.



■ For probing  
furcation lesions  
from different  
angles, both in the  
upper and in the  
lower jaw region.



Nabers Probe

LMErgoSense LM 20-21 ES

Furcation Probe

LMErgoSense LM 20B-21B ES

## INSTRUMENT SET



LM-DiagnoSet

LMErgoSense LM 6651 ES

Includes:  
LM-Servo 5 cassette, Mirror Handle & mirror,  
Explorer LM 5-8, WHO Probe LM 550B,  
Round Excavator 1.5 mm, Tweezers



**LM**

feel the  
difference

# LM Periodontics



# SHARPEN FREE אין עוד צורך בהשחזת הכלים!



## SICKLE SCALERS

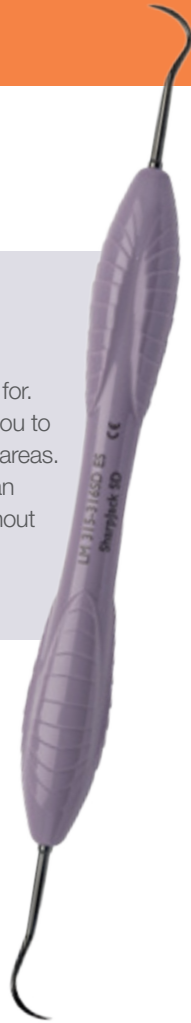


### LMSharpJack - what a great instrument!

It has the best features you could wish for. It's very narrow and thin which allows you to enter everywhere, even in the smallest areas. Perfect that the tip is so long so you can get in between molars. My favorite without competition, I'm in love!"

*Malin, Registered Dental Hygienist, Sweden*

The new LM-SharpJack instrument features extra long, thin blades for convenient interproximal access presenting the most popular scaler design in the US. The shank is optimally angled to universally adapt in anterior and posterior regions.



NEW

### LM-SharpJack SD

**LM**ErgoSense LM 315-316SD ES

- Sharp Diamond sharpen free coating
- Anterior/posterior scaler
- Thin dual-edged blades for easy and efficient interproximal access



### Micro Sickle SD

**LM**ErgoSense LM 301-302SD ES

- Sharp Diamond sharpen free coating
- Delicate working end
- Elongated shank



### Mini Sickle SD

**LM**ErgoSense LM 311-312SD ES

- Sharp Diamond sharpen free coating
- Fine, slightly angled blade
- For all tooth surfaces



### Sickle LM23 SD

**LM**ErgoSense LM 313-314SD ES

- Sharp Diamond sharpen free coating
- Posterior scaler
- Shorter blades and longer lower shank than in Mini Sickle



### Scaler H6-H7 SD

**LM**ErgoSense LM 146-147SD ES

- Sharp Diamond sharpen free coating
- For all tooth surfaces
- Longer shank and smaller lateral bending than in LM-SharpJack



### Columbia 4L-4R SD

**LM**ErgoSense LM 219-220SD ES

- Sharp Diamond sharpen free coating
- For incisors, canines and premolars
- For heavier calculus



### Barnhart 5-6 SD

**LM**ErgoSense LM 227-228SD ES

- Sharp Diamond sharpen free coating
- For molars
- Shorter lower shank

# NEW COATING!

# אין עוד צורך בהשחזת הכלים!

# SHARPEN FREE



## DUAL GRACEYS

- Dual Gracey, combining the benefits of universal curettes and finishing curettes Gracey 11-12 and 13-14
- For all tooth surfaces
- More information on page 27

NEW



Syntette SD

**LM**ErgoSense LM 215-216SD ES

- Sharp Diamond sharpen free coating



Mini Syntette SD

**LM**ErgoSense LM 215-216MSD ES

- Sharp Diamond sharpen free coating

## GRACEY CURETTES

NEW



Gracey 1/2 SD

**LM**ErgoSense LM 201-202SD ES

- Sharp Diamond sharpen free coating
- For incisors and premolars



Mini Gracey 1/2 SD

**LM**ErgoSense LM 201-202MSD ES

- Sharp Diamond sharpen free coating
- For incisors and premolars

NEW



Gracey 7/8 SD

**LM**ErgoSense LM 207-208SD ES

- Sharp Diamond sharpen free coating
- For premolars and molars
- For buccal and lingual surfaces



Mini Gracey 7/8 SD

**LM**ErgoSense LM 207-208MSD ES

- Sharp Diamond sharpen free coating
- For premolars and molars
- For buccal and lingual surfaces

NEW



Gracey 11/12 SD

**LM**ErgoSense LM 211-212SD ES

- Sharp Diamond sharpen free coating
- For premolars and molars
- For mesial surfaces



Mini Gracey 11/12 SD

**LM**ErgoSense LM 211-212MSD ES

- Sharp Diamond sharpen free coating
- For premolars and molars
- For mesial surfaces



NEW COATING!

אין עוד צורך בהשחזת הכלים!

SHARPEN FREE



## לבחור בחדות הגבוהה ביותר

סדרת ה - Sharpe Diamond  
עם ציפוי Micro Coating

עמידות לאורך זמן  
שיפור ביצועים  
חיסכון בזמן וכסף  
מניעת השלכות  
אורטופדיות



Gracey 13/14 SD

LM ErgoSense LM 213-214SD ES

- Sharp Diamond sharpen free coating
- For premolars and molars
- For distal surfaces



Mini Gracey 15/16 SD

LM ErgoSense LM 245-246MSD ES

- Sharp Diamond sharpen free coating
- For molars' mesial surfaces
- Blade shank more sharply angulated than in Mini Gracey 11/12 for better access



Mini Gracey 13/14 SD

LM ErgoSense LM 213-214MSD ES

- Sharp Diamond sharpen free coating
- For premolars and molars
- For distal surfaces



Mini Gracey 17/18 SD

LM ErgoSense LM 247-248MSD ES

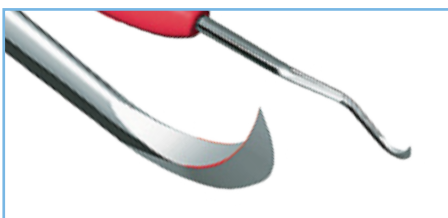
- Sharp Diamond sharpen free coating
- For molars' distal surfaces
- Blade shank more sharply angulated than in Mini Gracey 13/14 for better access

## SICKLE SCALERS

For the removal of supragingival calculus.

### Instrumentation:

For calculus removal place the tip third of the scaler's cutting edge against the tooth. Tilt the instrument toward the tooth to achieve 70° to 80° angle between the tooth and the blade. Apply lateral pressure and activate the scaler by using vertical, diagonal or horizontal pull strokes. To maintain control use short 2-3 mm long strokes.



### Design:

- Triangular cross section
- Face perpendicular to the lower shank
- Two cutting edges (red line)
- Pointed tip



### Handle options:



LM-ErgoSense

### Micro Sickle

LM-ErgoSense LM 301-302 ES

- 204SD design
- Delicate working end
- Elongated shank

Available also as Sharp Diamond coated sharpen free LM-ErgoSense instrument, see page 17.



Delicate working end. Especially for tight interdental spaces.



### Sickle LM204S

LM-ErgoSense LM 303-304 ES

- Sharply angulated shank and very fine working end



For all tooth surfaces, especially proximal surfaces.

### Mini Sickle

LM-ErgoSense LM 311-312 ES

- Fine, slightly angled blade
- For all tooth surfaces

Available also as Sharp Diamond coated sharpen free LM-ErgoSense instrument, see page 17.



### Sickle LM23

LM-ErgoSense LM 313-314 ES

- Shorter blade and longer lower shank than in the Mini Sickle

Available also as Sharp Diamond coated sharpen free LM-ErgoSense instrument, see page 17.



Crane-Kaplan

**LM**ErgoSense LM 322-323 ES

- Extremely strong, rigid, sharply angled blade
- For removal of heavy supragingival calculus



Mini Kaplan

**LM**ErgoSense LM 333-334 ES

- Same angle but with a more delicate blade than in the Crane-Kaplan



Push Scaler H4-H5

**LM**ErgoSense LM 144-145 ES

- The chisel-like working end used by pushing. The jacquette working end used by pulling.
- 90° working surface



Scaler H6-H7

**LM**ErgoSense LM 146-147 ES

- For all tooth surfaces

Available also as Sharp Diamond coated sharpen free LM-ErgoSense instrument, see page 17.



Laplander

**LM**ErgoSense LM 148-149 ES

- Similar to H6-H7 but with a lateral bending
- Easy access to molar area and proximal surfaces

# UNIVERSAL CURETTES

Designed for the removal of moderate and heavy calculus from all supra- and subgingival tooth surfaces.

## Instrumentation:

For calculus removal place one of the cutting edges of the universal curette against the tooth surface. Tilt the instrument toward the tooth to achieve 70° to 80° angle between the tooth and the blade. Apply lateral pressure and activate the curette by using vertical, diagonal or horizontal pull strokes. Both cutting edges of the same curette can be used by simply tilting the instrument one way or the other.



## Design:

- Working end perpendicular to the lower shank
- Two cutting edges (red line)
- Rounded tip



## Handle options:



LMErgoSense

# McCALL



McCall 13S-14S

LMErgoSense LM 222-223 ES

- For incisors and premolars



Mini McCall 13S-14S

LMErgoSense LM 222-223M ES

- For deep, narrow pockets
- Sharper, slightly rounded tip (not sickle-shaped)



Curette LM 15-16

LMErgoSense LM 225-226 ES

- Alternative for the McCall 13S-14S
- For removal of heavy calculus



McCall 17-18

LMErgoSense LM 277-278 ES

- Especially for broad molar surfaces
- Strong, uniform-width working end



McCall 17S-18S

LMErgoSense LM 279-280 ES

- Excellent in tight interdental spaces
- More delicate blade, working end narrower than in 17-18

## LANGER

Langer curettes combine universal curette's working end with Gracey curette's shank angulation. Angulations ease access to difficult areas and both mesial and distal surfaces can be treated with the same instrument end.



Langer 1/2

**LM**ErgoSense LM 281-282 ES

- For premolars and molars in the lower jaw



Langer 3/4

**LM**ErgoSense LM 283-284 ES

- For premolars and molars in the upper jaw



Langer 5/6

**LM**ErgoSense LM 285-286 ES

- For incisors in the upper and lower jaw

## MINI LANGER

Mini Langers have longer shanks and shorter working ends than standard Langers. Useful in tight interdental spaces. Better access into tight deep pockets and furcations.



Mini Langer 1/2

**LM**ErgoSense LM 281-282M ES

- For premolars and molars in the lower jaw



Mini Langer 3/4

**LM**ErgoSense LM 283-284M ES

- For premolars and molars in the upper jaw



Mini Langer 5/6

**LM**ErgoSense LM 285-286M ES

- For incisors in the upper and lower jaw



GOLDMAN FOX



Goldman-Fox 3

**LM**ErgoSense LM 233-234 ES

- For premolars and molars

COLUMBIA



Columbia 2L-2R

**LM**ErgoSense LM 217-218 ES

- For incisors and premolars



Columbia 4L-4R

**LM**ErgoSense LM 219-220 ES

- For incisors, canines and premolars
- For heavier calculus

Available also as Sharp Diamond coated sharpen free LM-ErgoSense instrument, see page 17.



Columbia 13-14

**LM**ErgoSense LM 237-238 ES

- For molars



Clinical use

BARNHART



Barnhart 5-6

**LM**ErgoSense LM 227-228 ES

- For molars
- Shorter lower shank

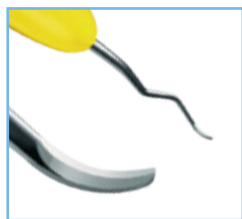
Available also as Sharp Diamond coated sharpen free LM-ErgoSense instrument, see page 17.

## LM INNOVATION

## LMSyntette

Dual Gracey, a combination of universal curettes Gracey 11/12 and Gracey 13/14, designed for the removal of supra- and subgingival calculus.

For both concave and convex surfaces. Distal and mesial surfaces of the same interdental space can be treated with the same instrument tip. Suitable for both vertical and horizontal techniques.



### Design:

- Two elliptical cutting edges
- Rounded toe

In the late 70-ties Swedish dentist Leif Ericsson, the Head of the Periodontological Department in Västervik Hospital, was challenged with the complexity and the amount of instruments there were available for the periodontal specialists.

Read story of LM-Syntette, the original dual Gracey at [www.lm-dental.com/lm-syntette](http://www.lm-dental.com/lm-syntette)



### LM-Syntette

**LM**ErgoSense LM 215-216 ES

- For all tooth surfaces

Available also as Sharp Diamond coated sharpen free LM-ErgoSense instrument, see page 18.



### Mini Syntette

**LM**ErgoSense LM 215-216M ES

- Excellent in tight, deep pockets
- Particularly well adapted for use on premolars' and incisors' palatal and lingual surfaces

Available also as Sharp Diamond coated sharpen free LM-ErgoSense instrument, see page 18.



DIAMOND FILES

Diamond coated files are designed for cleaning deep concave root surfaces in anatomically difficult areas.

Can be used with multidirectional strokes.



Concavity Diamond File  
SV 5-6

LMErgoSense LM 255-256D ES

- Diamond coated round curved toe
- For acute furcation lesions



Diamond File mes-dist

LMErgoSense LM 263-264D ES

- Extremely delicate diamond coated instrument for definitive scaling of the root surface
- Easy access with a fine, flexible blade in mesial-distal line angles and developmental grooves



Furcation Diamond File SV  
7-8

LMErgoSense LM 257-258D ES

- Diamond coated egg-shaped toe
- For deep furcation lesions



Furcation Diamond File

LMErgoSense LM 261-262D ES

- Extremely delicate diamond coated instrument for definitive calculus removal in furcations and root depressions
- Easy access with a fine, flexible blade design



FURCATION INSTRUMENT

Well-suited for the cleaning of the furcations of multi rooted teeth.



Furcator KS

LMErgoSense LM 259-260 ES

- Delicate, angled excavator
- Suitable also for the cleaning of narrow approximal concavities and grooves in incisors and premolars
- For cleaning of the furcation roof and inner surfaces, particularly concavations and grooves in them



Handle options:



LMErgoSense



Clinical use



Clinical use

## HOE SCALERS

For the removal of supra- and subgingival calculus.

Suitable for deep, narrow pockets and concave root surfaces. For both vertical and horizontal techniques.



### Design:

- Fine hoe-shaped blade with rounded corners
- Elliptical cutting edge



### Hoe Scaler, anterior

**LM**ErgoSense LM 112-113 ES

- For the anterior labial and lingual surfaces
- Works well also with lower incisors that are orally inclined



### Hoe Scaler, lateral

**LM**ErgoSense LM 134-135 ES

- For the buccal and lingual surfaces of all teeth
- Can also be used for furcations.



### Hoe Scaler, posterior

**LM**ErgoSense LM 156-157 ES

- For the mesial and distal surfaces of molars
- Can also be used for furcations



## LM-ERGOHOLD 3 SURGICAL HANDLE



### LM-ErgoHold 3

**LM**ErgoHold LM 9003

- Excellent grip with elastic silicone coating
- Precise blade control
- Controlled rotation
- Blade position responsiveness maintained
- Controlled movement through tissue
- Fits all blades with fitment No. 3 (blades 10, 10A, 11, 11K, 11P, 12, 12D, 15, 15C and 15S)

GRACEY FINISHING CURETTES

Area specific curettes for the removal of deep subgingival calculus. For the finishing of subgingival root surfaces.

Instrumentation:

Place the tip third or half of the cutting edge of a Gracey curette against the tooth surface. (The larger outer curve is always the cutting edge.) Make sure that the lower shank is parallel with the tooth surface. For calculus removal apply moderate and for root planing light lateral pressure and activate the curette by using vertical, diagonal or horizontal pull strokes.



Design:

- Working surface inclined 20° to the lower shank
- One curved cutting edge (red line)
- Rounded cutting tip

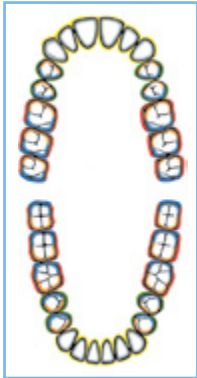
Handle options:



LMErgoSense



Sharpening



Area specific indications for Gracey curettes:

Incisors

All surfaces

- Gracey 1/2
- Gracey 5/6
- Gracey 3/4

Premolars and molars

Buccal-lingual

- Gracey 7/8
- Gracey 9/10
- Mesial
- Gracey 11/12
- Gracey 15/16

Distal

- Gracey 13/14
- Gracey 17/18

STANDARD AND MINI GRACEY

Mini Gracey has longer lower shank and smaller working end than in the standard model. Functions well in deep narrow pockets.

Gracey 1/2

LMErgoSense LM 201-202 ES

- For incisors and premolars

Available also as Sharp Diamond coated sharpen free LM-ErgoSense instrument, see page 18.

Mini Gracey 1/2

LMErgoSense LM 201-202M ES

Gracey 3/4

LMErgoSense LM 203-204 ES

- For incisors and premolars

Gracey P3-P4

LMErgoSense LM 266-267 ES

- Short shank makes the instrument more rigid





Gracey 5/6

**LM**ErgoSense LM 205-206 ES

- For incisors and premolars
- Especially useful in proximal surfaces



Gracey 9/10

**LM**ErgoSense LM 209-210 ES

- For molars' buccal and lingual surfaces using horizontal technique

TOP FAVORITE



Gracey 11/12

**LM**ErgoSense LM 211-212 ES

- For premolars' and molars' mesial surfaces

Available also as Sharp Diamond coated sharpen free LM-ErgoSense instrument, see page 18.



Mini Gracey 11/12

**LM**ErgoSense LM 211-212M ES



Gracey 7/8

**LM**ErgoSense LM 207-208 ES

- For premolars and molars
- For buccal, mesial and lingual surfaces

Available also as Sharp Diamond coated sharpen free LM-ErgoSense instrument, see page 18.



Mini Gracey 7/8

**LM**ErgoSense LM 207-208M ES



TOP FAVORITE



Gracey 13/14

**LM**ErgoSense LM 213-214 ES

- For premolars' and molars' distal surfaces

Available also as Sharp Diamond coated sharpen free LM-ErgoSense instrument, see page 19.



Mini Gracey 13/14

**LM**ErgoSense LM 213-214M ES





Gracey 15/16

**LM**ErgoSense LM 245-246 ES

- For molars' mesial surfaces
- Blade shank more sharply angulated than in Gracey 11/12 for better access



Mini Gracey 15/16

**LM**ErgoSense LM 245-246M ES

- Blade shank more sharply angulated than in Mini Gracey 11/12 for better access

Available also as Sharp Diamond coated sharpen free LM-ErgoSense instrument, see page 19.



Gracey 17/18

**LM**ErgoSense LM 247-248 ES

- For molars' distal surfaces
- Blade shank more sharply angulated than in Gracey 13/14 for better access



Mini Gracey 17/18

**LM**ErgoSense LM 247-248M ES

- Blade shank more sharply angulated than in Mini Gracey 13/14 for better access

Available also as Sharp Diamond coated sharpen free LM-ErgoSense instrument, see page 19.

## MACRO GRACEY

Standard model's long working end combined with mini model's longer lower shank. Excellent reach interdentally in deep pockets.

Macro Gracey 5/6

**LM**ErgoSense LM 205-206AF ES

- For incisors and premolars
- Especially useful in proximal surfaces

Macro Gracey 7/8

**LM**ErgoSense LM 207-208AF ES

- For premolars and molars
- For buccal, mesial and lingual surfaces

Macro Gracey 11/12

**LM**ErgoSense LM 211-212AF ES

- For premolars' and molars' mesial surfaces

Macro Gracey 13/14

**LM**ErgoSense LM 213-214AF ES

- For premolars' and molars' distal surfaces

## RIGID GRACEY

Blade shank thicker and more rigid, and working end slightly wider than in the standard model. Permits the use of greater pressure.

Rigid Gracey 1/2

**LM**ErgoSense LM 201-202R ES

- For incisors and premolars

Rigid Gracey 7/8

**LM**ErgoSense LM 207-208R ES

- For premolars and molars
- For buccal, mesial and lingual surfaces

Rigid Gracey 11/12

**LM**ErgoSense LM 211-212R ES

- For premolars' and molars' mesial surfaces

Rigid Gracey 13/14

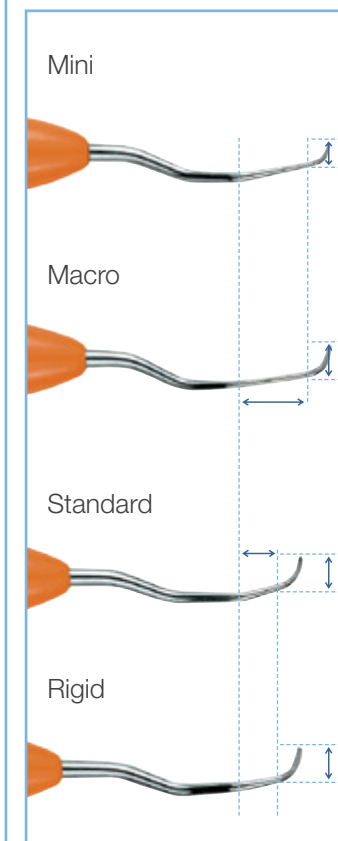
**LM**ErgoSense LM 213-214R ES

- For premolars' and molars' distal surfaces

Rigid Gracey 15/16

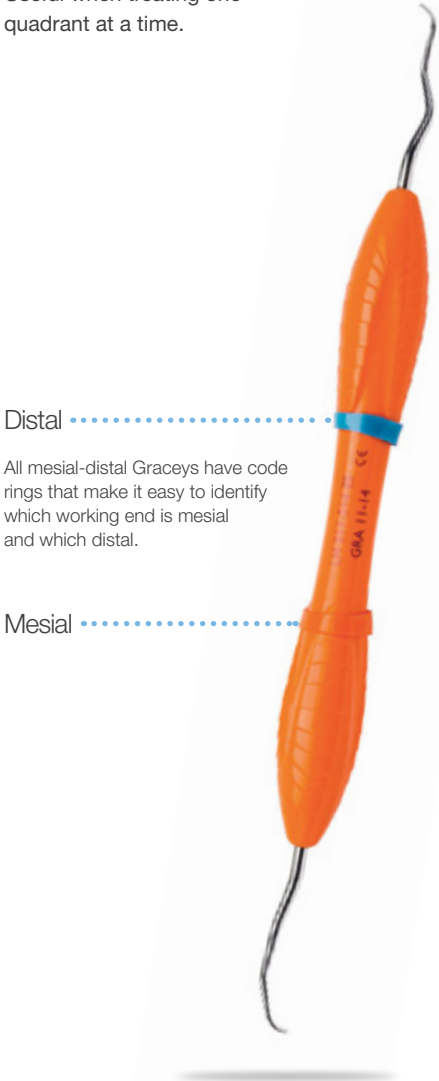
**LM**ErgoSense LM 245-246R ES

- For molars' mesial surfaces
- Blade shank more sharply angulated than in Gracey 11/12 for better access



MESIAL-DISTAL GRACEY

Combining a mesial and a distal working end in one instrument. Useful when treating one quadrant at a time.



Gracey 11/14

**LM**ErgoSense LM 211-214 ES

Gracey 12/13

**LM**ErgoSense LM 212-213 ES

Gracey 15/18

**LM**ErgoSense LM 245-248 ES

Gracey 16/17

**LM**ErgoSense LM 246-247 ES

MINI MESIAL-DISTAL GRACEY

Mini models have longer lower shank and smaller working end than the standard model. Functions well in deep narrow pockets.

Mini Gracey 11/14

**LM**ErgoSense LM 211-214M ES

Mini Gracey 12/13

**LM**ErgoSense LM 212-213M ES

Mini Gracey 15/18

**LM**ErgoSense LM 245-248M ES

Mini Gracey 16/17

**LM**ErgoSense LM 246-247M ES

MACRO MESIAL-DISTAL GRACEY

Macro models have standard model's long working end combined with mini model's longer lower shank. Excellent reach interdentally in deep pockets.

Macro Gracey 11/14

**LM**ErgoSense LM 211-214AF ES

Macro Gracey 12/13

**LM**ErgoSense LM 212-213AF ES

Handle options:



EXCHANGEABLE TIPS

LM-ErgoMix

LM-ErgoMix hand instrument series offers the dental team a specially economical, ecological and ergonomic alternative. Whenever there is a need for a tip replacement the lock grip is opened, a new tip is inserted and the lock grip is closed again. No extra tools are needed. Use LM-ErgoMix instruments in the normal way, clean and sterilize it like any other instrument. The sealed construction guarantees high level hygiene.

Benefits of retipping:

- Always sharp instruments
- Minimizes waste
- Enables personalized tip combinations.



TITANIUM TIPS FOR IMPLANTS

A great instrument series for implant maintenance. The ErgoMix structure ensures excellent tactile sensitivity and optimal rigidity.



Tips are made of sensitive but still effective titanium, which will not harm the abutments.

Implant Mini Universal curette

LM-ErgoMix LM 283-284MTi EM

- Delicate working end
- Especially for tight interdental spaces

Implant Mini Gracey 1/2

LM-ErgoMix LM 201-202MTi EM

- For incisors and premolars

Implant Mini Gracey 11/12

LM-ErgoMix LM 211-212MTi EM

- For premolars' and molars' mesial surfaces

Implant Mini Gracey 13/14

LM-ErgoMix LM 213-214MTi EM

- For premolars' and molars' distal surfaces

LM-ERGOMIX SPARE PARTS

| Spare handle                      |              |
|-----------------------------------|--------------|
| LM-ErgoMix handle dark grey       | LM 9011 EM   |
| Spare lock grips                  |              |
| Orange                            | LM 9020 EM   |
| Light blue                        | LM 9021 EM   |
| Grey                              | LM 9022 EM   |
| Yellow                            | LM 9023 EM   |
| Dark grey                         | LM 9024 EM   |
| Red                               | LM 9025 EM   |
| Spare titanium tips               |              |
| Implant Mini Universal Curettel L | LM 283MTi EM |
| Implant Mini Universal Curette R  | LM 284MTi EM |
| Implant Mini Gracey 1             | LM 201MTi EM |
| Implant Mini Gracey 2             | LM 202MTi EM |
| Implant Mini Gracey 11            | LM 211MTi EM |
| Implant Mini Gracey 12            | LM 212MTi EM |
| Implant Mini Gracey 13            | LM 213MTi EM |
| Implant Mini Gracey 14            | LM 214MTi EM |

## INSTRUMENT SETS



LM-PerioSet 1

**LM**ErgoSense LM 6652 ES

Includes:  
LM-Servo 5 cassette, Mini Sickle, Curette McCall 17-18,  
Gracey 1/2, Gracey 11/12, Gracey 13/14



LM-PerioSet 2

**LM**ErgoSense LM 6682 ES

Includes:  
LM-Servo 8 cassette, Mini Sickle, Curette McCall 17-18,  
Gracey 1/2, Gracey 9/10, Gracey 11/12, Gracey 13/14,  
Mini Gracey 15/16, Mini Gracey 17/18



LM-PerioKit

**LM**ErgoSense LM 6842 ES

*Exclusively selected  
by Dr. Giano Ricci / Style Italiano*

Includes:  
Implant Mini Universal curette, Concavity File SV 5-6,  
Mini Gracey 13-14, Mini Gracey 11-12, Mini Gracey 7-8,  
McCall 17S-18S, North Carolina Probe, Furcation Probe,  
LM-Servo 8 cassette

Powered by

**STYLEITALIANO**

**“ The LM-PerioKit by  
Style Italiano contains  
the essentials for the  
best possible therapy.**

Instruments have been selected in the  
spirit of Style Italiano whose philosophy  
is to make treatment feasible,  
teachable, repeatable. Periodontal  
therapy too can follow this approach.  
It's my feeling that, in the best interest  
of his patients, every practitioner should  
be able to properly execute non surgical  
therapy, crown lengthening procedures,  
free gingival grafts, simpler surgical root  
coverages.”

**Giano Ricci  
MD. DDS. MScD.**





## SPOON EXCAVATORS

For the removal of softened carious dentin and temporary fillings.



### Design:

- Spoon-shaped working end
- Rounded tip
- Long cutting edge, which can easily treat broader areas

### Handle options:



LMErgoSense

Spoon Excavator, 1.0 mm

LMErgoSense LM 522-523 ES

Spoon Excavator, 1.5 mm

LMErgoSense LM 533-534 ES



## ROUND EXCAVATORS

### Cariology:

- For the removal of softened, carious dentin
- For the removal of temporary fillings

### Surgery:

- To sever the periodontal ligament prior to extraction
- For the removal of granulation tissue after extraction



### Design:

- Round working end
- Curved cutting edge



Round Excavator, 1.0 mm

LMErgoSense LM 61-62 ES



Round Excavator, 1.5 mm

LMErgoSense LM 63-64 ES



Round Excavator, 2.0 mm

LMErgoSense LM 65-66 ES

## TRIPLE-ANGLED BACK ACTION EXCAVATORS

### Cariology:

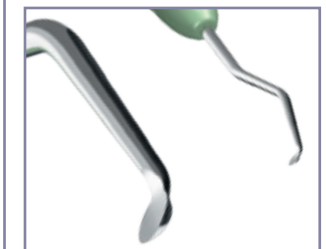
- For removing carious dentin
- For undermining enamel during tissue-saving preparations
- For the horizontal finishing of outer cavity margins

### Periodontics:

- For the removal of calculus from hard to reach areas such as the lower anterior lingual surfaces
- For the depuration of concave root grooves and furcations

### Surgery:

- For the removal of granulation tissue in connection with apical resections, flap operations, or extractions



### Design:

- Round working end and curved cutting edge
- Shank angulations ease treatments on hard to reach buccal, distal, and lingual surfaces



Triple-angled Back Action Excavator, 1.0 mm

LMErgoSense LM 611-621 ES



The blade shank is triple-angled, allowing for "back action" functions



Triple-angled Back Action Excavator, 1.5 mm

LMErgoSense LM 631-641 ES



Triple-angled Back Action Excavator, 2.0 mm

LMErgoSense LM 651-661 ES



Triple-angled Back Action Excavator, 3.5 mm

LMErgoSense LM 671-681 ES

- For the horizontal finishing of outer cavity margins

## GINGIVAL MARGIN TRIMMERS

For finishing enamel margins in the proximal area as well as for making plastic, amalgam and ceramic fillings.



Gingival Margin Trimmer, 1.2 mm, distal

LMErgoSense LM 121-122 ES



Gingival Margin Trimmer, 1.2 mm, mesial

LMErgoSense LM 125-126 ES

## SPATULA

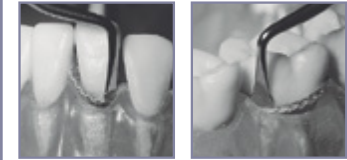


Spatula

LMErgoSense LM 450-460 ES

## CORD PACKERS

For packing retraction cord into the gingival pocket.



The bent blade enables getting around the tooth as well as the packing of the cord using vertical motions.



Cord Packer, 2.0 mm

LMErgoSense LM 490-491 ES



Cord Packer, 2.6 mm

LMErgoSense LM 492-493 ES

BASE CARRIERS

For carrying base or thin liner to dentin surfaces.



Base Carrier, rigid

**LM**ErgoSense LM 29H-30H ES



Base Carrier - Condenser, malleable tip

**LM**ErgoSense LM 30-34 ES

- Tip (30) can be bent into the desired form, allowing for easier access to hard to reach areas



Base Carrier - Condenser, rigid

**LM**ErgoSense LM 30H-34 ES

PLUGGERS

For packing all types of filling materials.



Plugger, cylindrical, 1.0-1.5 mm

**LM**ErgoSense LM 340-360 ES



Plugger, cylindrical, 1.2-2.0 mm

**LM**ErgoSense LM 350-380 ES



Plugger, cylindrical, 1.8-2.5 mm

**LM**ErgoSense LM 370-390 ES

BURNISHERS

For burnishing, modelling and finishing of fillings.



Burnisher

**LM**ErgoSense LM 31-32 ES

- For burnishing fillings at cavity margins
- For packing and shaping of composite fillings
- For packing of inlay-/onlay fillings



Burnisher - Plugger, ball-ended, 1.5-2.5 mm

**LM**ErgoSense LM 471-473 ES

- For plugging filling into cavity
- For polishing
- For plugging and shaping of composite fillings



Burnisher 27-29

**LM**ErgoSense LM 476-477 ES

- For shaping of occlusal surfaces
- For burnishing of fillings at cavity margins



Burnisher 21

**LM**ErgoSense LM 372-373 ES

- For shaping and packing of composite fillings
- For shaping of occlusal surfaces before hardening
- Pits, grooves, lateral ridges

## RESTORATION – LM-ARTE

**LM**

feel the  
difference

LM-Arte is a set of innovative instruments for aesthetic restorations and designed especially for composite layering. Each instrument is color-coded and named by its main function to enable easy, efficient and quick restorative treatments.

LM-Arte instruments have been developed in co-operation with Style Italiano, a study group of passionate clinicians and researchers specialized in aesthetic restorative dentistry.



Founders of Style Italiano, Walter Devoto DDS and Angelo Putignano MD, DDS.



### LM-Arte Applica

**LMErgoSense** LM 46-49 ES

- A very thin and flexible spatula for transporting and modeling of the composite



### LM-Arte Applica Twist

**LMErgoSense** LM 464-494 ES

- Thin and narrow spatula with bended angles for modeling difficult to reach areas such as approximal walls or the marginal ridge in matrix



### LM-Arte Modella

**LMErgoSense** LM 442-443 ES

- A very thin and flexible spatula for transporting and modeling of the composite



### LM-Arte Condensa

**LMErgoSense** LM 488-489 ES

- A long and round plugger especially for modeling composite



### Handle options:

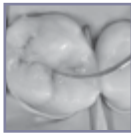


**LMErgoSense**

## LM-Arte Fissura

**LM**ErgoSense LM 481-487 ES

- Sharp pointed tips for modeling of occlusal surface structures



## LM-Arte Eccesso

**LM**ErgoSense LM 307-308 ES

- For the removal of composite and bonding residue



NEW

## LM-Arte Misura

**LM**ErgoSense LM 496-497 ES

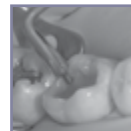
- For horizontal and vertical measuring of thickness (not plural) of composite layers on the restorations



## LM-Arte Posterior Misura

**LM**ErgoSense LM 498-499 ES

- For horizontal and vertical measuring of thickness of composite layers on the posterior restorations
- The fork shaped tip allows measuring and modeling of the composite wall with the presence of a matrix



## LM-Arte Set

**LM**ErgoSense LM 6840 ES

- Includes:
- LM-Arte Applica, LM-Arte Condensa, LM-Arte Fissura, LM-Arte Misura, LM-Arte Eccesso, LM-Servo 5 cassette

## LM-GENGIVA



## Gingival retracting kit

**LM**ErgoSense LM 7556K ES

Includes products:

LM-Gingiva / LM-MultiHolder PK III hand instrument

- See more on page 44

LM-Gingival Retractors (blue)

- For establishing optimum working conditions for procedures at the gum line.
- Assortment package of three sizes (ca 90 pieces, 30 pcs/size):
  - S for incisors
  - M for premolars
  - XL for molars
- See more on page 45

LM-MultiLever

- For the removal of disposable gingival retractors



## RESTORATION – DARK DIAMOND COATED INSTRUMENTS

אינם נדבקים לקומפוזיטים!!!

LM-ErgoSense Dark Diamond instruments with non-stick coating for easy placing and contouring of composite resins. The diamond like coating reduces the stickiness and allows for pleasant and precise restorative instrumentation.

### Dark Diamond features:

- Exclusive diamond like coating
- Hard surface
- Smooth surface
- Dark color coating
- LM-ErgoSense handle

### Benefits:

- Non-stick placement and sculpting of the composite resin
- Not sensitive to scratches
- Easy to clean
- Maximum contrast against the filling & minimal reflections
- Extreme precision and feel

Dark Diamond instruments can be cleaned and sterilized similarly to all other LM instruments.

Dark Diamond coating makes the surface of the tip extremely smooth and hard and allows for non-stick application and modeling of composite.

**LM**ErgoSense  
DARK DIAMOND



Burnisher

**LM**ErgoSense LM 31-32DD ES

- Dark Diamond non-stick coating
- For packing and modeling composite



Burnisher - Plugger, ball-ended, 1.5-2.5 mm

**LM**ErgoSense LM 471-473DD ES

- Dark Diamond non-stick coating
- For modeling composite



Modeller MH

**LM**ErgoSense LM 708-709DD ES

- Dark Diamond non-stick coating
- For packing large approximal fillings
- Cylinder shaped working end will not get stuck into the composite while light curing



Modeller MH Mini

**LM**ErgoSense LM 707-708DD ES

- Dark Diamond non-stick coating
- For packing small and medium approximal fillings
- Cylinder shaped working end will not get stuck into the composite while light curing



Packer-Modeller IO

**LM**ErgoSense LM 482-483DD ES

- Dark Diamond non-stick coating
- For packing and modeling composite
- Conical working ends optimal for shaping occlusal surfaces



Plastic instrument, anterior

**LM**ErgoSense LM 43-47DD ES

- Dark Diamond non-stick coating
- For placing, packing and contouring composite



Plastic instrument, posterior

**LM**ErgoSense LM 48-702DD ES

- Dark Diamond non-stick coating
- For placing, packing and contouring composite



Mini Spatula

**LM**ErgoSense LM 444-445DD ES

- Dark Diamond non-stick coating
- For placing and contouring composite

Handle options:



**LM**ErgoSense

## FOR COMPOSITES



Flow Instrument IO

LMErgoSense LM 484-485 ES

- For easy handling and shaping of flowable composites



Modeller MH

LMErgoSense LM 708-709 ES

- For packing large, approximal fillings in several layers
- Cylinder shaped working ends won't get stuck into the composite while light curing
- For pressing the matrix band in place while curing



Modeller MH Mini

LMErgoSense LM 707-708 ES

- For packing small or medium approximal fillings in several layers
- Cylinder shaped working ends won't get stuck into the composite while light curing
- For pressing the matrix band in place while curing

מחיר: 165 ש"ח (+מע"מ)



Packer-Modeller IO p

LMErgoSense LM 482-702 ES

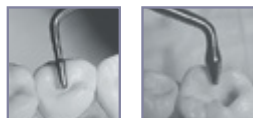
- Combination instrument for premolars



Packer-Modeller IO

LMErgoSense LM 482-483 ES

- Conical working ends, which are exceptionally well-suited e.g. to shaping of occlusal surfaces and to packing of all kinds of plastics
- Composites do not stick to the highly polished blades



Packer-Modeller IO m

LMErgoSense LM 483-703 ES

- Combination instrument for molars



Plastic Instrument, anterior

LMErgoSense LM 43-47 ES

- For placing, packing and contouring composite



Plastic Instrument, posterior

LMErgoSense LM 48-702 ES

- For placing, packing and contouring composite



Form Condenser, 1.5-2.5 mm

LMErgoSense LM 702-703 ES

- For shaping and packing of large filling surfaces



Composite Spatula 6

LMErgoSense LM 446-447 ES

- For placing and contouring composite



Mini Spatula

LMErgoSense LM 444-445 ES

- For placing and contouring composite

## CARVERS

For shaping of filling material to fit the anatomy of tooth, and for removal of soft excess.



1/2 Hollenback

LMErgoSense LM 741-751 ES

- For proximal and cervical surfaces



Nyström I

LMErgoSense LM 74-75 ES

- For proximal and occlusal surfaces



Nyström III

LMErgoSense LM 76-77 ES

- For interdental spaces, contact surfaces



**Maehlum**  
LMErgoSense LM 71-73 ES

- For removal of soft excess from gingival margins (71)
- For anatomical shaping of occlusal surfaces (73)



**Universal Carver, occlusal-proximal**  
LMErgoSense LM 71-72 ES

- For removal of soft excess from gingival margins (71)
- For anatomical shaping of occlusal surfaces (72)



**Cleoid-Discoid**  
LMErgoSense LM 731-732 ES

- For anatomical shaping of occlusal surfaces of small fillings

## EXCESS SCALERS



**Excess Scaler**  
LMErgoSense LM 785-795 ES

- For the removal of adhesive, cement, and composite excesses



**Mini Excess Scaler**  
LMErgoSense LM 784-794 ES

- An effective excess remover in extremely tight interdental spaces

## FILLING REMOVER



**Filling Remover**

LMErgoSense LM 764-766 ES

- For the removal of temporary fillings and crowns
- For bridge removal during fitting

## CROWN OFF



A groove is first burred from the lower edge of the crown up to the occlusal surface. The groove should be so deep that it reaches the cement. The Crown Off working end is placed longitudinally into the groove and turned as if spreading the groove. The blade is turned until the crown loosens and lifts up. The blade stays firmly in the groove and it is easy to control even when lot of force is used.



**Crown Off**

LMErgoSense LM 767-768 ES

- Blade double angled with a 45° twist
- Can be used for all types of levering and removing in the mouth

## INSTRUMENT SET



**LM-CompoSet**

LMErgoSense LM 6657 ES

Includes:  
LM-Servo 5 cassette, Mini Spatula, Plastic instrument, ant., Form Condenser, Packer-Modeller IO, Mini Excess Scaler

## LM-CELLO STRIPHOLDER

### Prophylactics:

- The removal of calculus from contact areas
- Preparation for flossing and toothpick use
- When finishing proximal surfaces, the strip can serve as a toothpaste applicator

### Restoration:

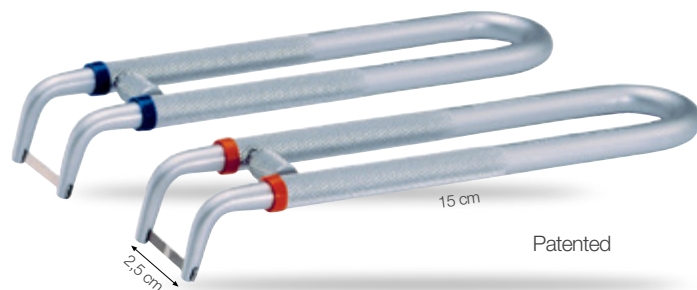
- The finishing of proximal and contact surfaces
- Preparation for both rubber dam and matrix techniques

### Esthetic and prosthetic care:

- The finishing of cement seams on laminates, cast fillings, and crowns

### Orthodontics:

- Enamel stripping



LM-Cello stripholder

LM 2010 C

- Includes a sample for each strip (6 pcs).

### Strip selection

package 50 pcs, coarseness 60µm

- Use the LM code rings to mark pre-fitted strips for mesial (orange) or distal (blue) surfaces.

### Strips with blanks

- The smooth part of the strip is used when the contact is exceptionally tight



LM 5502

- One-sided, width 2 mm, thickness 0,12 mm



LM 5503

- One-sided, width 3 mm, thickness 0,12 mm



LM 5503D

- Double-sided, width 3 mm, thickness 0,18 mm

### Strips without blanks



LM 5512

- One-sided, width 2 mm, thickness 0,12 mm



LM 5513

- One-sided, width 3 mm, thickness 0,12 mm



LM 5513D

- Double-sided, width 3 mm, thickness 0,18 mm



## LM-MULTIHOLDER SYSTEM

LM-MultiHolder instruments and different kinds of replaceable plastic working ends – a real multi-function instrument!

- Angle options allow for easy access to even the more complex areas
- Optimal combination of steel and plastic – the steel shank is rigid and only the working end will flex, when required



LM-MultiHolder PK I

LMErgoSense LM 750-756 ES



LM-MultiHolder PK II

LMErgoSense LM 752-754 ES



LM-MultiHolder PK III

LMErgoSense LM 752-756 ES

- Part of the Gengiva concept by Style Italiano, see page 39

### Handle options:



LMErgoSense



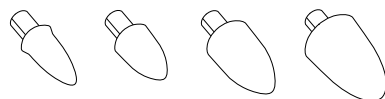
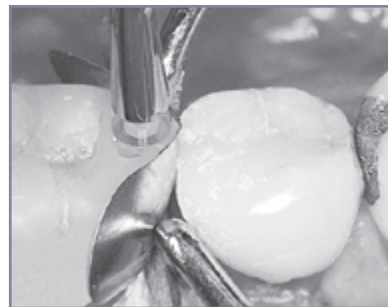
## WORKING ENDS FOR LM-MULTIHOLDER



LM-MultiLever

LM 7550

- For the removal of plastic working end



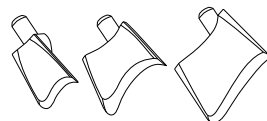
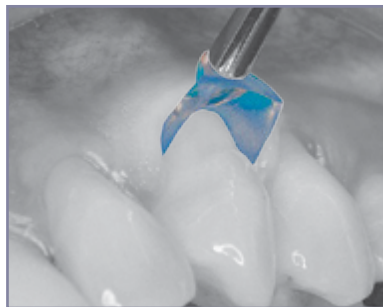
## LM-Contact Formers

Transparent tip for making correctly formed and tight approximal contact.

- Suitable for use with all matrices
- Will not stick to composite fillings
- Disposable

Four sizes corresponding to the size of the cavity, circa 60 pcs / package

|         |  |
|---------|--|
| LM 7622 | XS   |
| LM 7624 | S  |
| LM 7626 | M  |
| LM 7628 | L  |
| LM 7620 | Assortment package circa 120 pcs (30 pcs / size) |



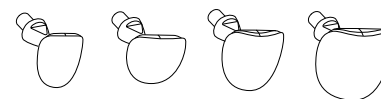
## LM-Gingival Retractors (blue)

For establishing optimum working conditions for procedures at the gum line.

- Disposable

Three sizes, circa 60 pcs / package

|         |   |
|---------|---|
| LM 7502 | S for incisors                                  |
| LM 7504 | M for premolars                                 |
| LM 7506 | XL for molars                                   |
| LM 7500 | Assortment package circa 90 pcs (30 pcs / size) |



## LM-Cervical Matrices

For making anatomically correct fillings at the gum line.

- Protects from moisture
- Prevents air bubbles
- Disposable

Four models for different size and shape, circa 60 pcs / package

|         |  |
|---------|--|
| LM 7602 | for incisors                                     |
| LM 7604 | for canines and premolars                        |
| LM 7606 | for small molars                                 |
| LM 7608 | for large molars                                 |
| LM 7600 | Assortment package circa 120 pcs (30 pcs / size) |



## LM-MultiHolder IntroKit

Introkit contains LM-MultiHolder instruments PK I and PK II (XSI or ES), MultiLever and samples of all available working ends.

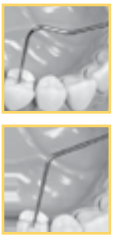
There are a total of 44 working ends, 4 for each size of each working end.

LM 7555K ES  
LM 7555K XSI

- You may order LM-MultiHolder IntroKit sample package also separately: LM 7555



ROOT CANAL EXPLORER



The instrument's long, sharp tips facilitate the location and opening of root canals to provide access for proper preparation instruments.

**Important!** Only use the instruments for the purpose which they are intended!



Root Canal Explorer

**LM**ErgoSense LM 27-28 ES

Handle options:



**LM**ErgoSense

ROOT CANAL EXCAVATORS

Root canal excavators have longer lower shanks and sharper blade angles than round excavators.

- Extended and correctly angled shanks as well as highly effective blade angles allow for the preparation of all types of pulp cavities
- Effective for the cleaning of pulp chambers and location of root canals as well as the removal of temporary fillings



Root Canal Excavator, 1.0 mm

**LM**ErgoSense LM 612-622 ES



Root Canal Excavator, 1.5 mm

**LM**ErgoSense LM 632-642 ES



Root Canal Excavator, 2.0 mm

**LM**ErgoSense LM 652-662 ES

ENDO SPREADERS

For the compacting of root canal filling materials during lateral condensation.



Endo Spreader 0.4 mm

**LM**ErgoSense LM 24 ES



Endo Spreader 0.23 mm

**LM**ErgoSense LM 22 ES

ENDO PLUGGER

For the vertical plugging of root canal fillings.



Endo Plugger, 0.5 - 1.0 mm

**LM**ErgoSense LM 41-42 ES

BEST PRODUCT

# Extract with confidence & luxate atraumatically

Familiar LM ergonomics and tactile sensitivity also in extracting instruments

- Ergonomic design
  - comfortable to hold
  - easy to rotate
- Secure LM-ErgoTouch surface
  - light, non-slip grip
- Well-balanced
  - controlled grip
- Lightweight
  - less strain on the hands
- Clear color-coding
  - easy identification
- LM-DuraGradeMAX supersteel
  - strong and sharp blades
- Tight seam at blade juncture
  - hygienic

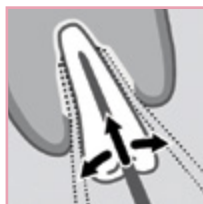


Best Product 2014,  
Dental Product Shopper

## LM-LIFTOUT

Luxating instruments for atraumatic extraction.

LM-LiftOut instruments allow tooth extraction to be done as atraumatically as possible. This is important in order to enable rapid healing and future implant placement. The thin tip of the instrument is introduced into the periodontal space and slowly advanced toward the apex of the root while twisting the instrument gently back and forth. LM-LiftOut is not suitable for use as an elevator.



להפרדה ועקירה  
א-טראומטית

## STRAIGHT BLADE



LM-LiftOut S2  
LM 812220



LM-LiftOut S3  
LM 812230



LM-LiftOut S4  
LM 812240



LM-LiftOut S5  
LM 812250

## CURVED BLADE



LM-LiftOut C3  
LM 812430



LM-LiftOut C4  
LM 812440

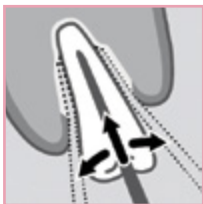


LM-LiftOut C5  
LM 812450

## LM-SLIMLIFT

Luxating instruments designed for extremely narrow places.

LM-SlimLift instruments are especially designed to reach places you cannot go with traditional luxating instruments. It allows tooth extraction to be done as atraumatically as possible. This is important in order to enable rapid healing. The extremely fine tip of the instrument is introduced into the very narrow periodontal space. The instrument is slowly advanced towards the apex of the root while turning the instrument gently back and forth. The LM-SlimLift is not suitable for use as an elevator.



להפרדה ועקירה  
א-טראומטית של  
שיניים צפופות

## STRAIGHT BLADE



LM-SlimLift S3  
LM 812630



LM-SlimLift S4  
LM 812640



LM-SlimLift S5  
LM 812650



The extremely slim design of blade allows for the most atraumatic extractions.

## CURVED BLADE



LM-SlimLift C3  
LM 812830



LM-SlimLift C4  
LM 812840



LM-SlimLift C5  
LM 812850

## MAINTENANCE



Cassette  
LM 810001

LM extraction instruments are supplied in a convenient cassette that protects both the instrument and the handler during the maintenance cycle. The cassette keeps the instrument from puncturing the sterilization pouch, so sterility is more likely to be assured.

- The cassette can be color-coded
- The cassette is compatible with LM-ServoMax tray



Sharpening stone  
LM 818002

Sharpen the extractors occasionally using the round sharpening stone as a simple and quick way to keep them in top condition and always ready to use.

- Suitable for LM-SlimLift, LM-LiftOut, LM-TwistOut and LM-RootOut instruments

## LM-TWISTOUT

Elevators for forceful extraction.

LM-TwistOut instruments are suitable for tooth extraction in situations where strong force or torque must be applied.



להנפה

## STRAIGHT BLADE



LM-TwistOut S3  
LM 814230



LM-TwistOut S4  
LM 814240



LM-TwistOut S5  
LM 814250

## CURVED BLADE



LM-TwistOut C3  
LM 814430



LM-TwistOut C4  
LM 814440



LM-TwistOut C5  
LM 814450

## ROOT TIP INSTRUMENTS



Root Tip Pick

LMErgoSense LM 769-771 ES

- For the removal of root tip
- Suits well in all difficult to reach areas



LM-RootOut  
LM 812210

- Designed for delicate root teasing procedures
- Not recommended for more substantial root tip removal
- Similar to Heidbrink root tip picks
- Ergonomically designed handle for a good grip

## Optimal implant insertion

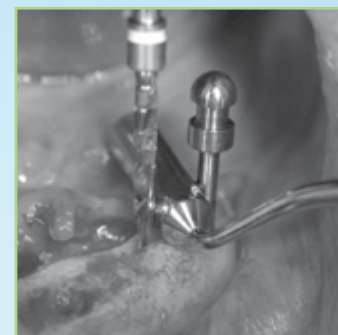
### Guiding for correct mesio-distal implant insertion

LM Implant Misura MR instruments help positioning the first spiral drill at a correct distance from the pillar i.e. implant or natural element adjacent to the implant and respecting the bone biology.

This results in correct amount of bone between the implant and the tooth, so that the bone crest remains stable over time. Once the biology is respected and the case is spaced correctly, a long lasting esthetic result is established.



Implant adjacement to a natural element



Implant adjacement to another implant in edentulous arch

### LM Implant Misura MR by **STYLEITALIANO**

The instruments are designed by Marco Redemagni MD, DDS. Style Italiano is a study group of passionate clinicians and researchers specialized in aesthetic restorative dentistry.



*"These instruments are really essential when it comes to positioning the first drill"*

Marco Redemagni  
MD, DDS

More information at [www.styleitaliano.org](http://www.styleitaliano.org) and [www.facebook.com/styleitaliano](http://www.facebook.com/styleitaliano).

For more details and clinical information about LM Implant Misura MR, please scan the QR.



Markings on the tip facilitate checking bucco-lingual position of the implant drilling.



### Choosing the correct size

The instruments are available in different diameters. Each instrument has a larger tip for insertion of adjacent implants and and a smaller tip for spacing an implant from a natural element.

Choose the right instrument size based on the implant diameter:

| Instrument color | Initial drill Ø |        | Distance in mm  |                   |
|------------------|-----------------|--------|-----------------|-------------------|
|                  | 1.5 mm          | 2.0 mm | Tooth - Implant | Implant - Implant |
| Gray             | 3.4-3.5         | 4.0    | 3.0             | 5.0               |
| Green            | 3.75            | 4.25   | 3.1             | 5.3               |
| Yellow           | 4.0-4.1-4.15    | 4.6    | 3.3             | 5.6               |
| Orange           | 4.3             | 4.8    | 3.4             | 5.8               |
| Blue             | 4.8-4.85        | 5.35   | 3.7             | 6.3               |





LM Implant Misura MR  
3.0-5.0

**LM**ErgoSense LM 400-401 ES



LM Implant Misura MR  
3.1-5.3

**LM**ErgoSense LM 402-403 ES



LM Implant Misura MR  
3.3-5.6

**LM**ErgoSense LM 404-405 ES



LM Implant Misura MR  
3.4-5.8

**LM**ErgoSense LM 406-407 ES



LM Implant Misura MR  
3.7-6.3

**LM**ErgoSense LM 408-409 ES



LM Implant Misura MR Kit

**LM**ErgoSense LM 6843 ES

Five LM Implant Misura MR instruments  
(3.0-5.0, 3.1-5.3, 3.3-5.6, 3.4-5.8,  
3.7-6.3) and LM-Servo 5 instrument  
cassette





Ligature On-Off SL

**LM**ErgoSense LM 414-17CL ES

- The explorer-like end (17CL) for both application and removal of ligatures. Ligatures can be lined up on the lower shank.
- The forked end (414) is particularly suitable for guiding a ligature ring over e.g. the fourth wing of a bracket.

Plastic Ligature Applicator

**LM**ErgoSense LM 416-417 ES

- For placement of orthodontic rubber ligatures

Arch Wire Tucker

**LM**ErgoSense LM 412-413 ES

- For bending the end of an arch wire
- The flattened ball-ends have 1 mm holes, where the wire can easily be placed and turned.
- Long blade fits well even in tight places.

Ligature Tucker - Scaler U15

**LM**ErgoSense LM 414-150 ES

- For tucking of ligatures and arch wires (414)
- For removing of cement excesses following the removal of orthodontic appliance (150)



Ligature Tucker

**LM**ErgoSense LM 414-415 ES

- For tucking of ligatures and arch wires
- For placement of arch wire
- The forked end is particularly suitable for guiding a ligature ring over e.g. the fourth wing of a bracket.



Ligature Director

**LM**ErgoSense LM 411-415 ES

- For tucking ligatures and arch wires
- For placement of arch wire
- The forked end is particularly suitable for guiding a ligature ring over e.g. the fourth wing of a bracket. The forked end tip (411) is rotated 90° for more convenient & ergonomic use.

## INSTRUCTIONS FOR INSTRUMENT MAINTENANCE

### 1. Pre-disinfection

Do not leave dirty instruments dry - put them into disinfecting solvent as soon as possible. Pay close attention to the correct dosages and exposure times. If you are using a thermodisinfectant, skip service cycle steps 1-2.

### 2. Rinsing

Rinse instruments thoroughly under warm running water.

### 3. Cleaning

Washing machine / Thermodisinfectant

**Hand wash:** Remove all visible dirt with warm water. Use a soft brush and detergent.

**Ultrasonic cleaner:** use instrument cassettes to prevent damage.

### 4. Rinsing

Rinse instruments thoroughly under warm running water.

### 5. Drying

Dry instruments before sterilization.

### 6. Inspection and sharpening

Sharpen, service or replace instruments, if necessary.

**Note!** Do not sharpen LM Sharp Diamond instruments.

### 7. Packing

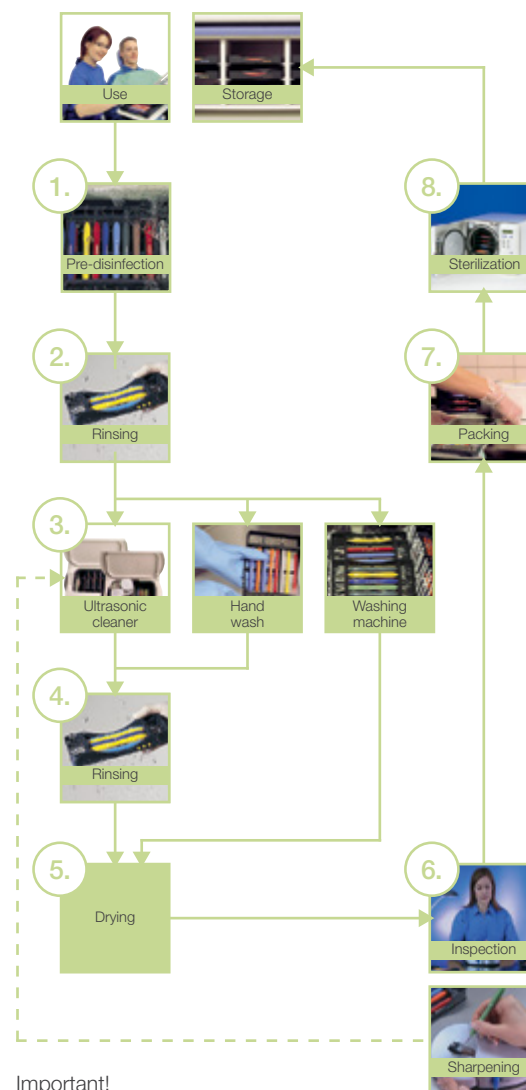
Pack serviced and cleaned instruments for sterilization.

### 8. Sterilization

**Autoclave:** place clean, dry and properly packed instruments into the autoclave.

**Hot-air sterilization:** place clean, dry and properly packed instruments into the hot-air sterilizer; do not fit them in too tightly; ensure that temperature is correct (max. 180 °C/355 °F).

**Note!** LM extraction instruments max 134 °C/273 °F.

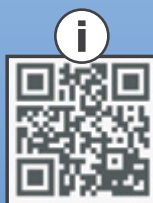


#### Important!

- Regularly service the machines
- Follow all user instructions
- Pay special attention to correct dosage and exposure
- Use LM-Servo cassettes to protect the instruments and avoid sharp injuries

# LM Dental

LM-Instruments Oy  
Norrbyn rantatie 8 | FI-21600 Parainen | Finland  
Tel. +358 2 4546 400  
info@lm-dental.com | www.lm-dental.com



For catalog language versions and other LM marketing materials visit [materialbank.lm-dental.com](http://materialbank.lm-dental.com) or scan the QR code for LM Material Kit app.



Where to buy?  
Scan the QR code to find your LM dealers worldwide.

