



**The mobile cabinet
for the dental industry.**



Europe's best selling mobile cabinet.

Dear DEMED customer,

in clinics, dental practices and universities, good equipment is the heart of any practice. But it is not only about the quality of equipment and instruments but also about storing them properly.

DEMED is specialist in designing, developing and manufacturing of mobile cabinets. We work closely with dental experts from a wide range of fields. Our E, D, P and S series offer a wide range of sophisticated solutions that make your daily life in the practice easier.

All mobile cabinets are 100% made in Germany, equipped with concealed castor wheels and thanks to their clean design and free choice of colours, fit harmoniously into any working environment.

Choose Europe's No. 1 mobile cabinet.



Hüseyin Kanat
Managing Director



Contents

Benefits

10–11 Puristic design

12–13 First-rate components

14–15 Concealed castor wheels

16–17 Concealed wires

18–19 Customised configuration

20–21 Free choice of colour

22–23 Wide range of accessories

Products

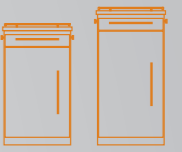
26–29 E series



30–33 K series



34–37 P series



34–37 P series



38–41 S series



42–45 Instrument table



46–47 Accessories

Service

48–49 Models

50 DEMED service

Benefits

10-23

Tooth-tastic.

Puristic design

The design of your practice rooms, clinic or laboratory plays a decisive role in the well-being of your employees, patients or students. This is why our mobile cabinets are bound to impress with their clean, aesthetic design.





Open up and say ahhh- some.

First-rate components

When our customers see what's inside a DEMED they can't help but be amazed. Our mobile cabinets are made exclusively using only the best quality components. The bodies are made of galvanized steel. The handles and standard rails are made of solid, bead-blasted stainless steel. The glass doors are made of ESG safety glass.



Finally an employee who can follow you.

Concealed castor wheels

All DEMEDs have four concealed, ball-bearing, smooth-running wheels. Your mobile cabinet and the instruments and devices stored in it cannot only be easily moved around in the examination room but also follow you to any other desired room.



Guaranteed to have an ace in the hole.

Concealed wires

Our E, D and P series have smart cable outlets and integrated multiple sockets with cable reels. This lets you store your devices permanently and keep them protected in your DEMED.

Dangerous trip hazards caused by cables lying around and cable breakage caused by winding cables around equipment are now a thing of the past.

An orchestra for your instruments.

Customised configuration

You can individually build your DEMED, choosing from up to three heights, two widths, five drawer heights and four different pull-out shelves. You can choose between an aluminium body colour and satin-finished ESG safety glass with softclose technology for the doors. In addition, there is a wide selection of accessories to choose from. This way, all equipment and instruments find a home.





Brilliant white, or orange or even green ...

Free choice of colour

Thanks to a high-quality and impact-resistant powdercoating in all colours of the RAL colour system, your DEMED fits in perfectly with the design of your interior or can even add a welcome touch of colour if so desired.



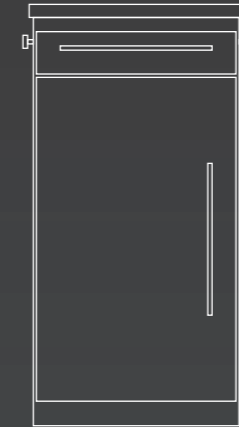
Armed to the teeth.

Wide range of accessories

In addition to our mobile cabinets, we have numerous useful instrument holders and compartment inserts in our product range. All are removable and sterilisable.

Products

26-47



E series

Thin and elegant

The E series is our absolute top-selling DEMED. With a width of only 42 cm, the mobile cabinets take up little space and still offer plenty of space for your accessories, equipment and instruments.

Applications

Surgery	■ ■ ■ ■ ■
Endodontics	■ ■ ■ ■ ■
Prophylaxis	■ ■ ■ □ □
Impressions	■ ■ ■ □ □
Storage	■ ■ ■ ■ □

All dimensions, models and prices can be found in our separate price list.

The E series in use

Versatile

The E series is available with a drawer, front panel with standard rail or sliding worktop with additional storage compartment, as desired



Out of sight

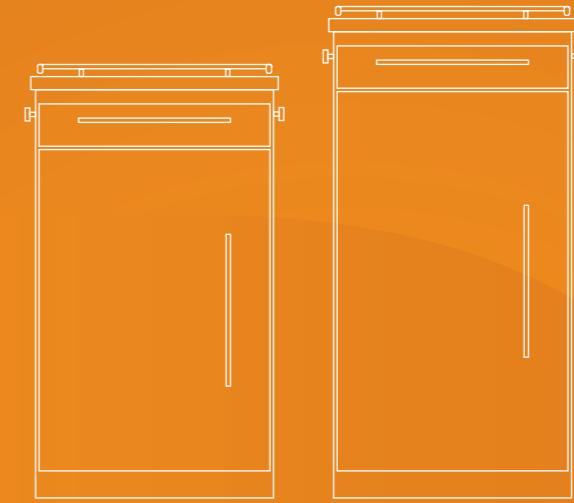
Storage compartment under the worktop, ideal for small accessories such as endofiles, paper tips, etc.



Flexible

Inside can be divided up freely with up to our pull-out shelves in different designs





D series

Amazing amount of storage space

The D series are our mobile cabinets which offer the largest volume. The ideal solution if you wish to store many and/or large instruments, for example, in surgery.

Applications

Surgery	■ ■ ■ ■ ■
Endodontics	■ ■ ■ ■ □
Prophylaxis	■ ■ ■ □ □
Impressions	■ ■ ■ □ □
Storage	■ ■ ■ ■ □

The D series in use



Highly exciting
The D series is ideal for storing taller and wider surgical equipment and implant motors



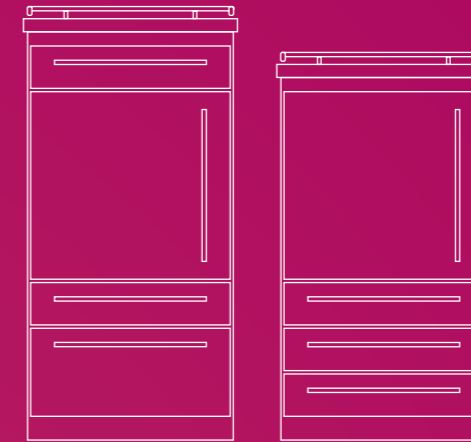
Proficient

Choice of one or two front drawers for storing your equipment



Highly flexible

Easy-to-adjust pull-out shelves for a wide range of equipment



P series

Pros for prophylaxis

The P series offers practical combinations of drawers and equipment compartments. The P models are preferably used in the areas of preserving and cleaning teeth.

Applications

Surgery	■ ■ ■ □ □
Endodontics	■ ■ ■ ■ □
Prophylaxis	■ ■ ■ ■ ■
Impressions	■ ■ ■ ■ ■
Storage	■ ■ ■ ■ □

All dimensions, models and prices can be found in our separate price list.

The P series in use



Entootherastic

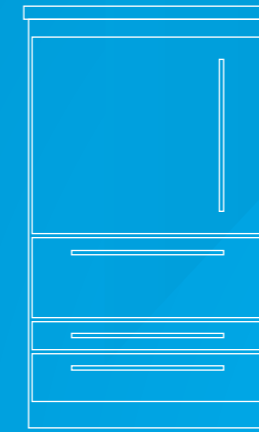
Flexible partitionable stainless steel inserts for all drawers



Versatile

The P series can be used multi-functionally for impression materials, attachments and/or alginate mixers with accessories





K series

All dimensions, models and prices can be found in our separate price list.

The K series in use





S series

Endless drawers

If you are looking for a mobile cabinet with drawers only, then the S series is the right choice. We offer you two different drawer widths and five different heights. With dust protection lips according to RKI guidelines, if desired.

Applications

Surgery	■ ■ ■ □ □
Endodontics	■ ■ ■ □ □
Prophylaxis	■ ■ ■ ■ □
Impressions	■ ■ ■ ■ ■
Storage	■ ■ ■ ■ ■

All dimensions, models and prices can be found in our separate price list.

The S series in use



Close at hand

The fully extending drawers in the S series let you conveniently access all of the drawer contents



Tidy-minded

Individually partitionable inserts and stainless steel instrument holders





Instrument table

The over-the-top side table

The I1 is the perfect addition to the DEMED mobile cabinets as a storage option for instruments. Like all DEMEDs, the infinitely adjustable table is available in your choice of colour.

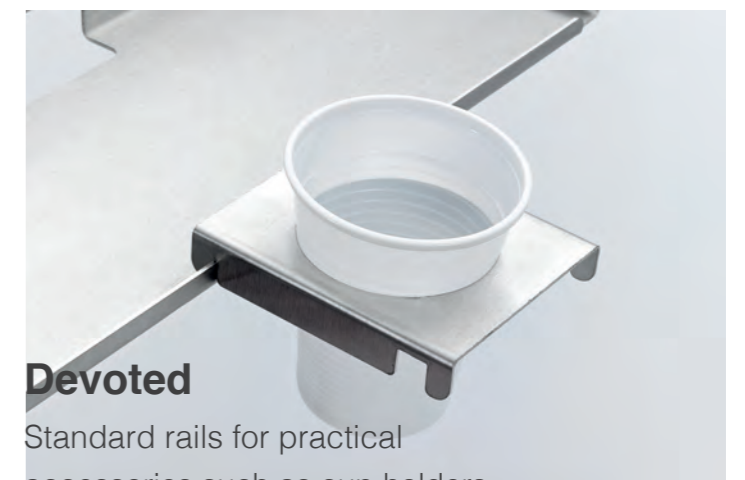
All dimensions, models and prices can be found in our separate price list.

The I1 in use



Mobile

The I1 is height-adjustable and, thanks to hidden castors, can be moved as required



Devoted

Standard rails for practical accessories such as cup holders or waste disposal systems

Accessories

Little helpers, big help

As a leading supplier, we are very close to the market and are constantly developing our range of accessories, mostly in close cooperation with our customers and partners.



Holder for instruments

with/without stainless steel inlay, suitable for thermal disinfectors



Holder set

for implantology



Holder set

for endodontics



Holder for foot controller

round, small, large (from left to right)

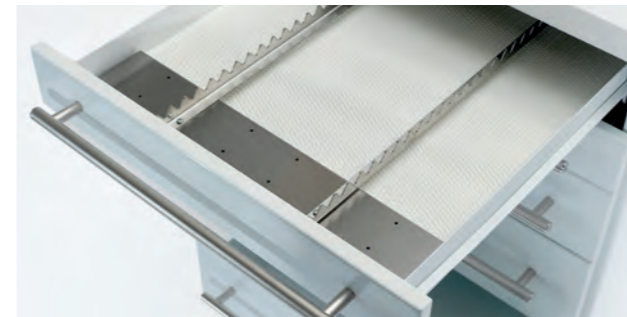


New



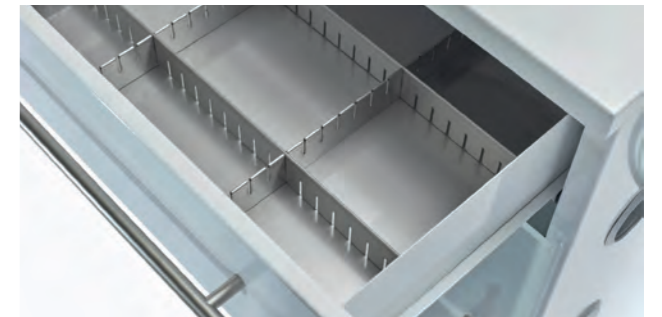
Pull-out shelves

Tray, flat pull-out shelf, pull-out shelf with medium edge, pull-out shelf with high edge (from left to right)



Stainless steel instrument holder

for all drawers



Drawer inserts made of stainless steel

in three heights, with flexibly positionable borders



Stainless steel cup holder

for mounting on standard rails



Additional tray made of stainless steel

for mounting on standard rails



NEU

New



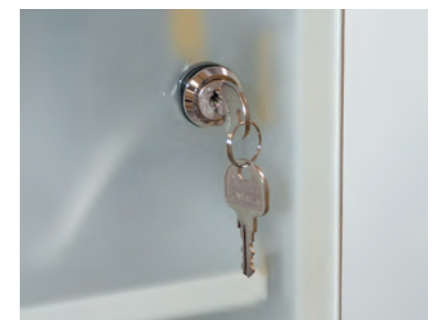
Dispenser holder

for mounting on the guard rails, for positioning freely or mounting on the wall



Rubbish bin made of steel

for mounting on standard rails



Models

The E series

E mobile cabinet

Carcass (H x W x D): 90 cm x 42 cm x 50 cm
Dimensions with standard rail: +3 cm per side
Cable outlets: 2 x right, 2 x left, 1 x back



Door: Made of aluminium in colour of carcass or satin-finished ESG safety glass, opens 270°, with steel handle and magnetic catch // Worktop: Made of steel in colour of carcass or solid surface material in white // Cable management: Three-way socket strip integrated in the underbody with automatic cable wider // Standard rails: Made of stainless steel, right, left and on the front (depending on version) // Wheels: Four ball-bearing, smooth-running wheels

The D series

D1 mobile cabinet

Carcass (H x W x D): 90 cm x 50 cm x 50 cm
Dimensions with standard rail: +3 cm per side
Cable outlets: 2 x right, 2 x left, 1 x back



D5 mobile cabinet

Carcass (H x W x D): 108 cm x 50 cm x 50 cm
Dimensions with standard rail: +3 cm per side
Cable outlets: 3 x right, 3 x left, 1 x back



Door: Made of aluminium in colour of carcass or satin-finished ESG safety glass, opens 270°, with steel handle and magnetic catch // Worktop: Made of steel in colour of carcass or solid surface material in white // Cable management: Three-way socket strip integrated in the underbody with automatic cable wider // Standard rails: Made of stainless steel, right and left // Wheels: Four ball-bearing, smooth-running wheels

The P series

P1 mobile cabinet

Carcass (H x W x D): 90 cm x 42 cm x 50 cm



P3 mobile cabinet

Carcass (H x W x D): 80 cm x 42 cm x 50 cm



Door: Made of aluminium in colour of carcass or satin-finished ESG safety glass, opens 270°, with steel handle and magnetic catch // Worktop: Made of steel in colour of carcass or solid surface material in white // Cable management: Three-way socket strip integrated in the underbody with automatic cable wider // Wheels: Four ball-bearing, smooth-running wheels

The S series

S1 mobile cabinet

Carcass (H x W x D):
90 cm x 50 cm x 50 cm



S3 mobile cabinet

Carcass (H x W x D):
90 cm x 42 cm x 50 cm



S5 mobile cabinet

Carcass (H x W x D):
80 cm x 42 cm x 50 cm



Included in delivery: Carcass without drawers, drawer combination individually selectable from five drawer heights // Worktop: Made of steel in colour of carcass or solid surface material in white // Wheels: Four ball-bearing, smooth-running wheels

Instrument table

I1 instrument table

Height: Infinitely variable height adjustment from 78 cm to 120 cm
Dimensions of tabletop: 65 cm x 45 cm



Material: Frame made of powder-coated steel with polished stainless steel tabletop // Wheels: Four ball-bearing, smooth-running wheels

DEMED service

Learning about DEMED



Our products can be found at numerous trade fairs and congresses. This gives you the opportunity to get to know all DEMED models personally and to choose your favourites. You are also welcome to visit us at our company headquarters in Waiblingen near Stuttgart.

Hotline for queries



Should you have any queries not covered in this catalogue and the corresponding price list, please feel free to contact us by phone on: **+49 7151 270760**

Unpack and put it in its place



Your DEMED is securely packed and delivered to you already assembled. You don't need any tools or put in tedious hours of work and you can start to store your equipment and instruments straight away after unpacking them.

Technical support



We also take care of your DEMED after your purchase and advise you on modifications, subsequent purchases or ordering accessories.

Please note

Devices and instruments shown are not included in the scope of delivery. Technical changes, colour deviations due to printing and errors excepted. All dimensions, models and prices can be found in our separate price list.

Photography

Peter Oppenländer Fotodesign (www.peter-oppenlaender.de)

Design

St. Thomas – Fiederers kreatives Dorf Werbeagentur GmbH (www.stthomas.de)

Printer

Druckerei Göhring (www.goehring-druck.de)



DE MED

Your specialist dealer

DEMED Dental Medizintechnik e.K.

Gräfenau 56, 75339 Höfen an der Enz

T +49 7081 9545-50

F +49 7081 9545-55

info@demed-online.de

www.demed-online.de